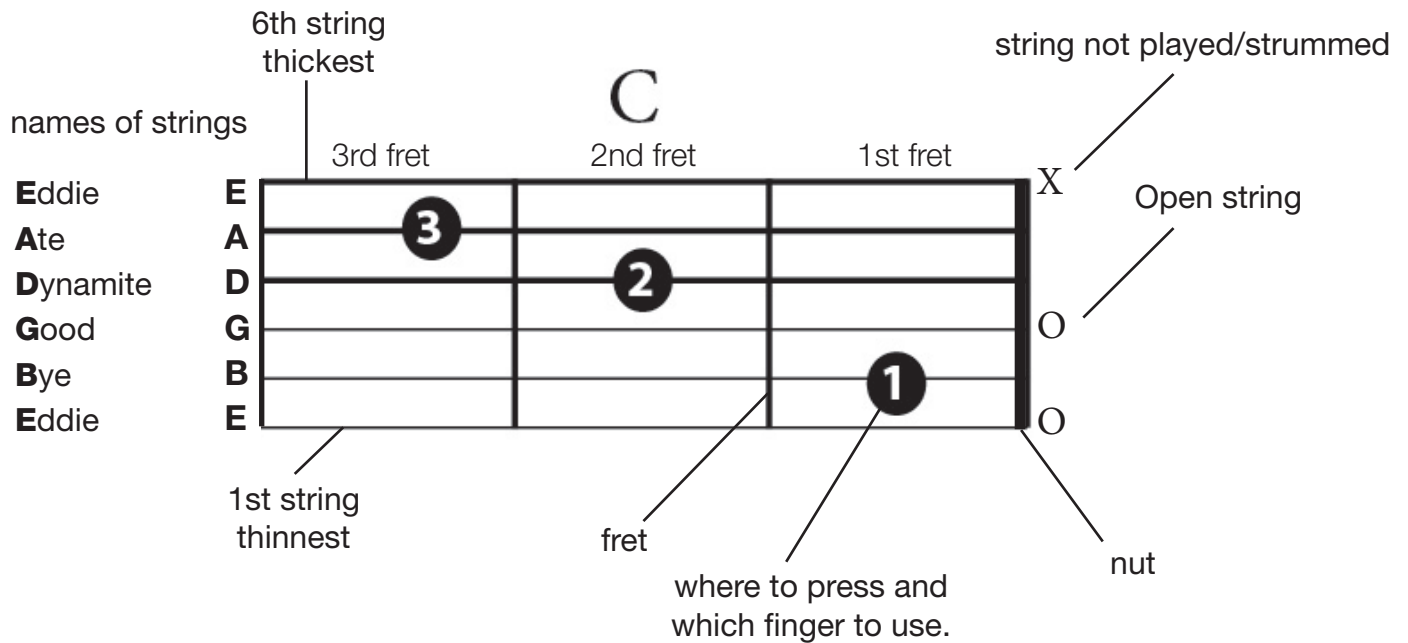


Reading Chord Charts

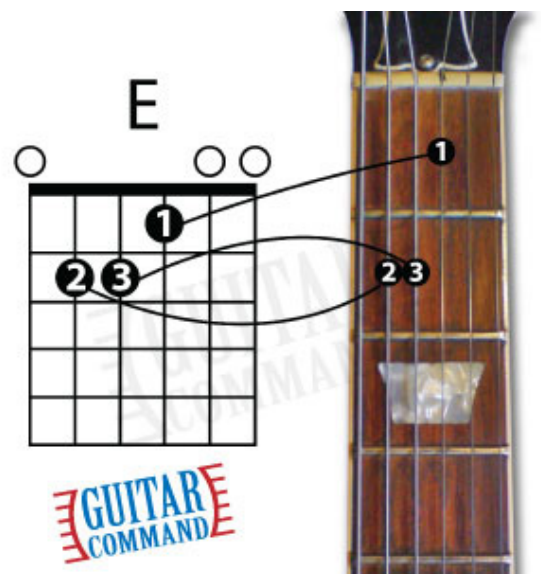
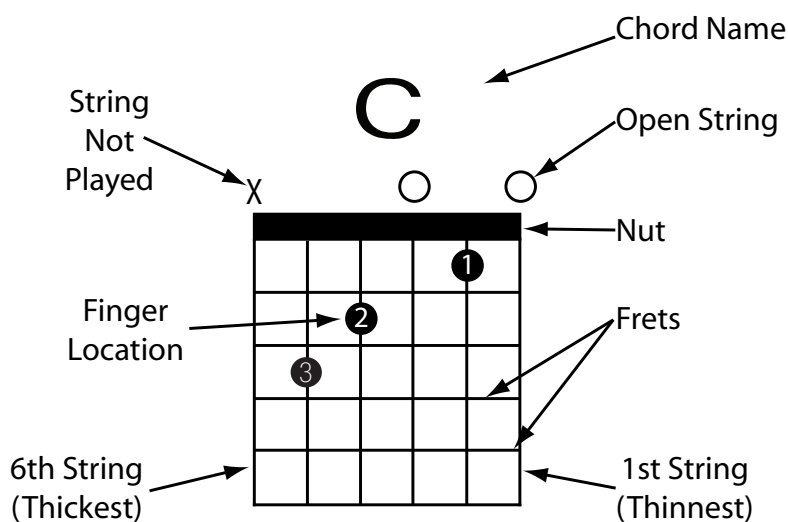
Mirror Image

What you would see if you were looking at yourself play in a mirror or looking at your teacher playing the chord in front of you.



Standard Chord Chart

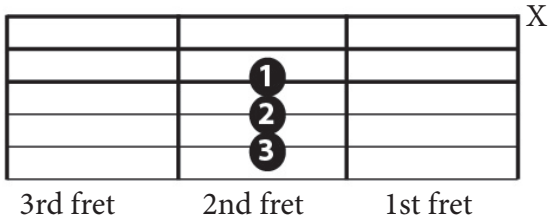
This chord chart is what you would see looking down at your own guitar and is the most commonly used chord chart.



when there is no X - then strum all 6 strings
eg. E Chord.

OPEN CHORDS

A

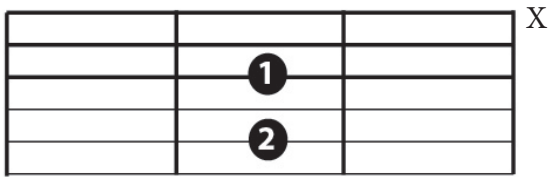


for easy version remove
 fingers 3 and 2

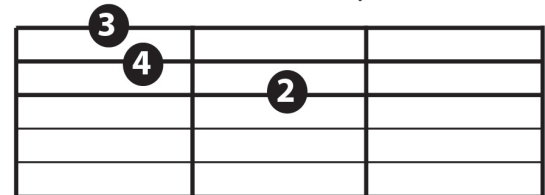
C



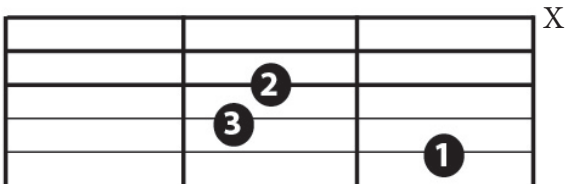
A7



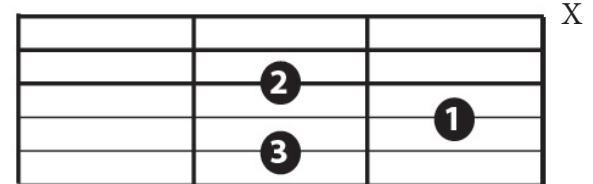
Cmaj7



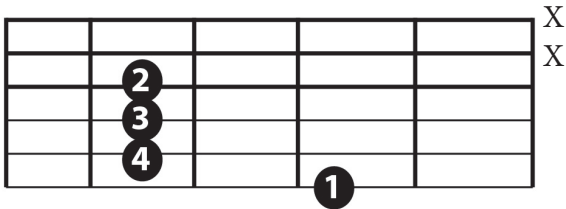
Am



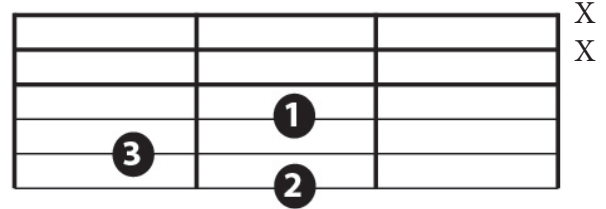
C#m



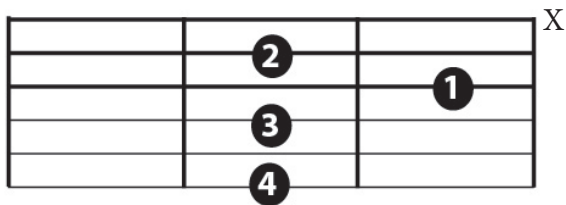
B



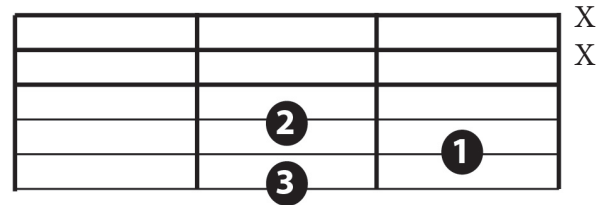
D



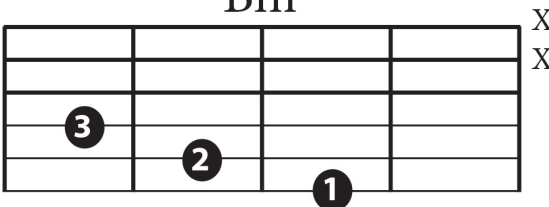
B7



D7




Bm



Dm

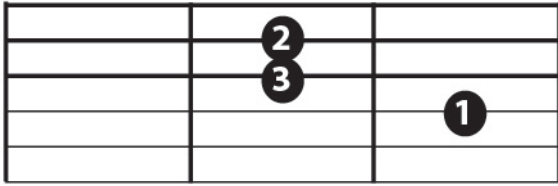


X = don't strum this string

 = easy chord version

OPEN CHORDS

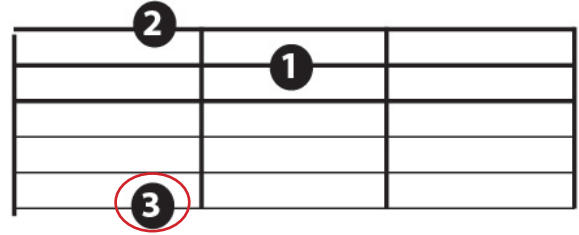
E



3rd fret 2nd fret 1st fret

for easy version remove fingers 2 and 1

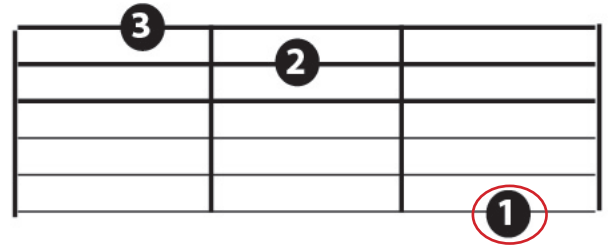
G



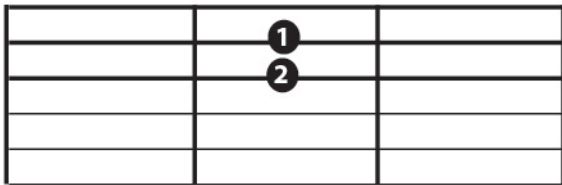
E7



G7



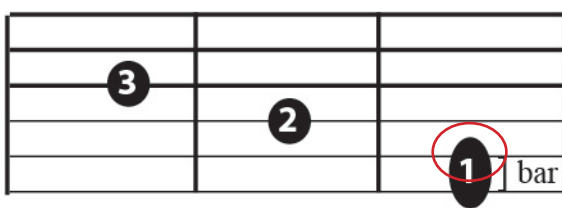
Em



 = easy chord version


X = don't strum this string

F

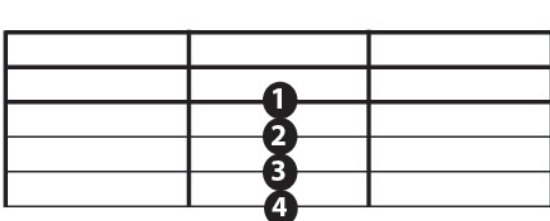


X
X

X (easy version only)

 = for easy version of F - don't bar the 2 strings, place 1st finger only on 2nd string in the first fret

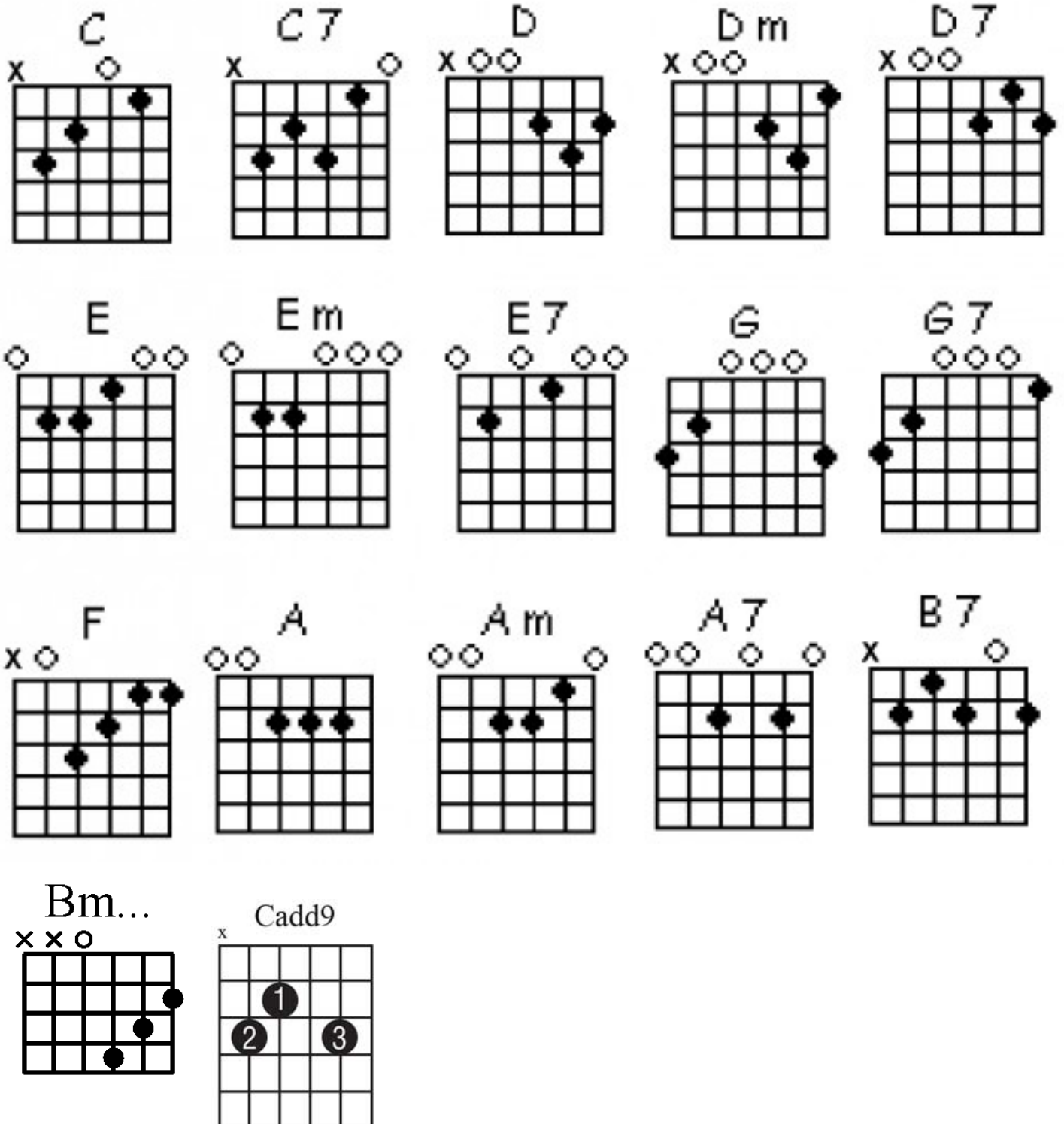
F#m



X
X

Standard Chord Chart

This chord chart is what you would see looking down at your own guitar and is the most commonly used chord chart.



m = minor
 7 = seven
 # = sharp
 maj = major